

# Information Bulletin #1





# WORDS OF WELCOME

## WELCOME



### to the World Cup of the worlds best slalom canoeists

The city of Markkleeberg is happy and proud to host one of the 2017 ICF Canoe Slalom World Cups. From 30th of June to 02nd of July the best paddlers from all over the world will ride a slalom course in Germany – in Markkleeberg. We will be glad to see many adrenalin filled races of speed and skill.

Only the best can tackle the tides, dodge the obstacles, and speed through up to 23 gates in a race against the clock. Therefore we expect many athletes, who won and competed in Olympic Games, World and European Championships.

230 athletes from 40 nations are glad to start once more in Markkleeberg and the German National team is always dedicated to enter the course of the 2015 European Championships especially due to the great audience at the home course and the exciting atmosphere.

The host "Leipziger Kanu Club" under the experienced guidance of Frithjof Bergner and Christoph Kirsten guarantees together with his long time approved staff an excellent organised event. Although it remains a great challenge to organize an ICF Canoe Slalom World Cup on the one side and also after Augsburg a second Canoe Slalom World Cup in Germany in the same year.

As always my gratitude does not only apply to the mentioned persons but also particularly to more than 150 volunteers, who were committed to prepare best preconditions for the ICF Canoe Slalom World Cup Final in the last months and especially in last weeks.

Special thanks to the persons in charge of the City of Markkleeberg as well as to the patrons and sponsors, whose support makes this highlight finally possible.

I wish that all competitions of the Canoe Slalom World Cup will flow smoothly with good water and weather conditions. I keep my fingers crossed for all participants that they will be able to demonstrate their full power at this third of completely five Canoe Slalom World Cups once again.

GERMAN CANOE FEDERATION

Yours,

Thomas Konietzko  
President



# WORDS OF INTRODUCTION

The Organising committee welcomes all athletes, team leaders, coaches, functionaries and guests to the 2017 ICF Canoe Slalom World Cup Markkleeberg. This event will take place on Kanupark Markkleeberg, from 29<sup>th</sup> June to 2<sup>nd</sup> July 2017.

The information listed below should give you a review and support preparing for this event. Please note that some information is for the present.

Christoph Kirsten  
President of Local Organising Committee  
Leipziger-Kanu-Club e.V.



# TABLE OF CONTENTS

Important key dates / Facts	3
Venue	4
Competition rules / Categories and Events	5
Entries and Accreditation / Accreditation fee	5
Provisional time schedule	6
Sparkassen Extreme Canoe Slalom	7
Training schedule / Team Leaders Meeting	8
International Technical Officials meeting	8
Boat control / Boat storage / First aid service	8
Water safety / Anti-Doping control	8
Official video service	8
Accommodations / Access to Kanupark Markkleeberg	9
Visa and Customs Information	10
Parking rules / Tickets for spectators	11
Press and media information / Contact details	12



STADT MARKKLEEBERG



Stadt Leipzig



## IMPORTANT KEY DATES

### Official training period

26<sup>th</sup> June - 29<sup>th</sup> June 2017 Training in groups after registration

### Entries

29th May 2017 Numerical entries deadline  
16<sup>th</sup> June 2017 Nominal entries deadline

### Accreditation

16<sup>th</sup> June 2017 Accreditation deadline

## FACTS

### Name

2017 ICF Canoe Slalom World Cup Markkleeberg



### Period

29<sup>th</sup> June - 2<sup>nd</sup> July 2017

### Location

Markkleeberg, Germany  
Kanupark Markkleeberg



### Organisers

International Canoe Federation  
German Canoe Federation  
Leipziger-Kanu-Club



### Website

[www.slalomworldcup.com](http://www.slalomworldcup.com)

### Email

[office@slalomworldcup.com](mailto:office@slalomworldcup.com)





## VENUE

### Kanupark Markkleeberg

The course was built in 2006 and host of different national and international competitions during the last years. The course has a length of 270 m and a drop of 5.70 m. The amount of water will be 14 m<sup>3</sup>/s (white water level III-IV).



## COMPETITION RULES

2017 ICF Canoe Slalom World Cup Markkleeberg will be organized in accordance to the ICF Canoe Slalom Competition Rules 2017.

## CATEGORIES AND EVENTS

Categories	Canoe Slalom Events	Extreme Canoe Slalom Events
	Individual	Individual
Kayak Men (KM)	K1M	K1M
Kayak Women (KW)	K1W	K1W
Canadian Men (CM)	C1M	-
	C2M	-
Canadian Women (CW)	C1W	-
Canadian Mixed (C2Mx)	C2Mx	-

## ENTRIES AND ACCREDITATION

Entries and accreditations have to be done by the ICF online entry system.

### Please note...

... the following **deadlines**:

<b>Numerical Entries:</b>	<b>29<sup>th</sup> May 2017</b>
<b>Nominal Entries:</b>	<b>15<sup>th</sup> June 2017</b>
<b>Accreditations:</b>	<b>15<sup>th</sup> June 2017.</b>

For any question regarding entries and biographies please contact: [isis@canoeicf.com](mailto:isis@canoeicf.com)

## ACCREDITATION FEE

Accreditation fee: **105.00 EUR/person** (access period: 26<sup>th</sup> June to 2<sup>nd</sup> July 2017) will be charged for: **Athletes, Team Leaders, Team Staff & Media Officer**

...and includes: VISA support, parking facilities, boat storage, accreditation, security, free training on the course in groups (26-29/06/17), access to Athlete's Area (27/06/17-02/07/17), food for lunch (30/06/17-02/07/17), water safety (30/06/17-02/07/17)

We will not charge a participation fee for: **ITOs, Presidents/Secretary Generals**

Payment for Accreditation can be done...

... by **cash (no credit or debit card!)** during the official accreditation period (29/06/17 12:00 - 16:00)

... by **bank transfer** to the organiser's banking account **till 23/06/17**:

Bank: Sparkasse Leipzig

Account holder: Leipziger-Kanu-Club e.V.

BIC: WELADE8L

IBAN: DE28860555921173528209

For identifying your payment please use **2017\_ICF\_CSL\_WC\_IOC-Code**.



Stadt Leipzig





## PROVISIONAL TIME SCHEDULE

### Monday

**26<sup>th</sup> June 2017**

08:00 - 09:00 Open training session  
09:00 - 19:00 Official training in groups according to the training schedule  
19:00 - 20:00 Open training session

### Tuesday

**27<sup>th</sup> June 2017**

08:00 - 09:00 Open training session  
09:00 - 19:00 Official training in groups according to the training schedule  
19:00 - 20:00 Open training session

### Wednesday

**28<sup>th</sup> June 2017**

08:00 - 09:00 Open training session  
09:00 - 19:00 Official training in groups according to the training schedule  
12:00 - 18:00 Free boat and equipment control  
19:00 - 20:00 Open training session  
18:00 Team Leaders Meeting (Kanupark Markkleeberg)

### Thursday

**29<sup>th</sup> June 2017**

07:30 - 12:30 Official training in groups according to the training schedule  
08:00 - 13:00 Free boat and equipment control  
12:00 - 13:00 1<sup>st</sup> Technical Officials Meeting (at Kanupark Markkleeberg)  
12:00 - 16:00 Official Accreditation  
12:00 - 14:15 Heats Course construction  
14:15 - 14:45 Heats Course construction with boats on the water  
15:00 - 15:30 Heats Course Demonstration in sections  
16:00 - 16:30 Heats Course technical rehearsal (full length run)  
16:45 Course closing  
17:00 Opening Ceremony (Kanupark Markkleeberg)

### Friday

**30<sup>th</sup> June 2017**

08:00 Course opening  
08:00 Technical Officials Meeting  
08:45 - 08:51 Forerunner (6 boats)  
09:00 - 09:25 C2M Heats 1<sup>st</sup> Run (1' interval)  
09:30 - 10:05 C1W Heats 1<sup>st</sup> Run (1' interval)  
10:10 - 11:30 K1M Heats 1<sup>st</sup> Run (1' interval)  
11:45 - 11:55 C2M Heats 2<sup>nd</sup> Run (1' interval)  
12:00 - 12:15 C1W Heats 2<sup>nd</sup> Run (1' interval)  
12:20 - 13:10 K1M Heats 2<sup>nd</sup> Run (1' interval)  
13:25 - 14:00 Break  
14:15 - 14:21 Forerunner (6 boats)  
14:30 - 14:50 C2Mx Heats 1<sup>st</sup> Run (1' interval)  
14:55 - 15:45 K1W Heats 1<sup>st</sup> Run (1' interval)  
15:50 - 16:40 C1M Heats 1<sup>st</sup> Run (1' interval)  
16:55 - 17:00 C2Mx Heats 2<sup>nd</sup> Run (1' interval)  
17:05 - 17:35 K1W Heats 2<sup>nd</sup> Run (1' interval)  
17:40 - 18:10 C1M Heats 2<sup>nd</sup> Run (1' interval)  
18:25 - 18:55 Final Course Construction  
19:00 - 19:30 Final Course Demonstration in section  
19:45 - 20:15 Final Course Demonstration (fill runs)  
20:15 Technical Officials Meeting  
20:30 Course closing



STADT MARKKLEEBERG



Stadt Leipzig



## PROVISIONAL TIME SCHEDULE

### Saturday

1<sup>st</sup> July 2017

08:30	Course opening	
08:30	Technical Officials Meeting	
09:30	Forerunner	(6 boats, System's check)
09:50 - 10:30	C2M Semi-Final	(20 boats; 2' interval)
10:35 - 11:35	C1W Semi-Final	(30 boats; 2' interval)
11:40 - 13:00	K1M Semi-Final	(40 boats; 2' interval)
13:30 - 13:55	C2M Final	(10 boats; 2.5' interval)
14:00 - 14:25	C1W Final	(10 boats; 2.5' interval)
14:30 - 14:55	K1M Final	(10 boats; 2.5' interval)
15:00 - 15:30	Awards Slalom	
15:00 - 16:00	Course construction	Sparkassen Extreme Canoe Slalom
16:15 - 17:05	K1M Time Trials	(1' interval)
17:10 - 17:40	K1W Time Trials	(1' interval)
17:55 - 18:19	K1M 1/8 Finals CSLX	(3' interval)
18:30	Technical Officials Meeting	
	Course closing	

### Sunday

2<sup>nd</sup> July 2017

08:45	Course opening	
08:45	Technical Officials Meeting	
09:50	Forerunner	(6 boats, System's check)
10:00 - 10:50	C2Mx Semi-Final	(20 boats; 2' interval)
10:55 - 11:55	K1W Semi-Final	(30 boats; 2' interval)
12:00 - 13:00	C1M Semi-Final	(30 boats; 2' interval)
13:30 - 13:55	C2Mx Final	(10 boats; 2.5' interval)
14:00 - 14:25	K1W Final	(10 boats; 2.5' interval)
14:30 - 14:55	C1M Final	(10 boats; 2.5' interval)
15:00 - 15:30	Awards Slalom	
15:00 - 16:00	Course construction	Sparkassen Extreme Canoe Slalom
16:15 - 16:27	K1W 1/4 Finals CSLX	(3' interval)
16:30 - 16:42	K1M 1/4 Finals CSLX	(3' interval)
16:45 - 16:51	K1W 1/2 Finals CSLX	(3' interval)
16:54 - 17:00	K1M 1/2 Finals CSLX	(3' interval)
17:03 - 17:06	K1W Final CSLX	(3' interval)
17:09 - 17:12	K1M Final CSLX	(3' interval)
17:16 - 17:24	Awards Sparkassen Extreme Canoe Slalom	
17:30	Technical Officials Meeting	
	Course closing	

## SPARKASSEN EXTREME CANOE SLALOM

We will distribute the following prize money in the context of Sparkassen Extreme Canoe Slalom:

	K1M	K1W
1 <sup>st</sup> place:	1.000 EUR	1.000 EUR
2 <sup>nd</sup> place:	500 EUR	500 EUR
3 <sup>rd</sup> place:	250 EUR	250 EUR



STADT MARKKLEEBERG



Stadt Leipzig





## TRAINING SCHEDULE

**Official training period:**

- Monday 26<sup>th</sup> June to Thursday 29<sup>th</sup> June
- training in groups according to schedule
- 1 Slot for each federation per day

## TEAM LEADERS MEETING

**Official Team Leaders meeting** will be held at **Kanupark Markkleeberg** on **Wednesday 28<sup>th</sup> June 2017 18:00 - 19:00**.

## INTERNATIONAL TECHNICAL OFFICIALS MEETING

The first meeting of the **International Technical Officials (ITO)** will be held at **Kanupark Markkleeberg** on **Thursday 29<sup>th</sup> June 2017 12:00 - 13:00**.

## BOAT CONTROL / BOAT STORAGE

**Free boat control:** **Wednesday 28<sup>th</sup> June 2017 12:00 - 18:00 & Thursday 29<sup>th</sup> June 2017 08:00 - 13:00**

**Boat storage:** Please note that storage of boats between the training sessions and during the competition has to be made:

- not in windy areas
- not at escape routes or other roads/ways.

Please use the boat racks next to Athlete's Area (behind the training course) and note that storage is on the owner's risk.

## FIRST AID SERVICE

During the event period (**30<sup>th</sup> June to 2<sup>nd</sup> July 2017**) we will provide a **first aid service**. Please note that this medical service will cover only emergency cases and that all participants are responsible to arrange, at their cost, their own medical insurance policy.

## WATER SAFETY

During the event period (**30<sup>th</sup> June to 2<sup>nd</sup> July 2017**) we will provide a **water safety**.

## ANTI-DOPING CONTROL

**Anti-Doping control** will be performed in accordance with the **ICF Anti-Doping requirements** and **WADA standards**.

## OFFICIAL VIDEO SERVICE

We will provide an official video service (**Technical Video Signal**) during the event period. There will be a **video area** for this service. Costs for this official video service are included in the participation fee. The provided signal is in **HD quality**.



STADT MARKKLEEBERG



Stadt Leipzig



## ACCOMMODATIONS



The **Atlanta Hotel International Leipzig** supports this event and is the perfect place to accommodate athletes, coaches, visitors and organisers. You will find more information on [www.atlanta-hotel.de](http://www.atlanta-hotel.de).

Furthermore you will find accommodations next to the course on the following websites:

City Markkleeberg: [www.markkleeberg.de/de/kultur\\_tourismus/uebernachten](http://www.markkleeberg.de/de/kultur_tourismus/uebernachten)

City Leipzig: [www.leipzig.travel/en/Plan\\_your\\_stay/Accommodation\\_2057.html](http://www.leipzig.travel/en/Plan_your_stay/Accommodation_2057.html)

Region Leipziger Neuseenland: [www.leipzigerneuseenland.de/en/accommodation](http://www.leipzigerneuseenland.de/en/accommodation)

## ACCESS TO KANUPARK MARKKLEEBERG

Kanupark Markkleeberg (venue) is situated in the South of city of Markkleeberg which is located in the Middle Eastern part of Germany and enclosed on the city of Leipzig.

Kanupark Markkleeberg is situated next to **highway A38**. You can leave this highway in northward direction to City Markkleeberg and follow the main road B2. Leave main road B2 on first junction after approx. 3 km. Then follow the direction sign "Markkleeberger See" and "Kanupark".

Furthermore the cities of Leipzig and Markkleeberg are located next to the Leipzig-Halle Airport as well as connected to the national and European wide railway system.



The distances to the major cities around the venue are...

Distance from...	...to Kanupark Markkleeberg	
Leipzig	10 km	20 min
Dresden	100 km	1 hour
Berlin	210 km	2 hours
Prague	250 km	2.5 hours
Frankfurt/Main	390 km	4 hours
Munich	430 km	4 hours
Augsburg	440 km	4.5 hours



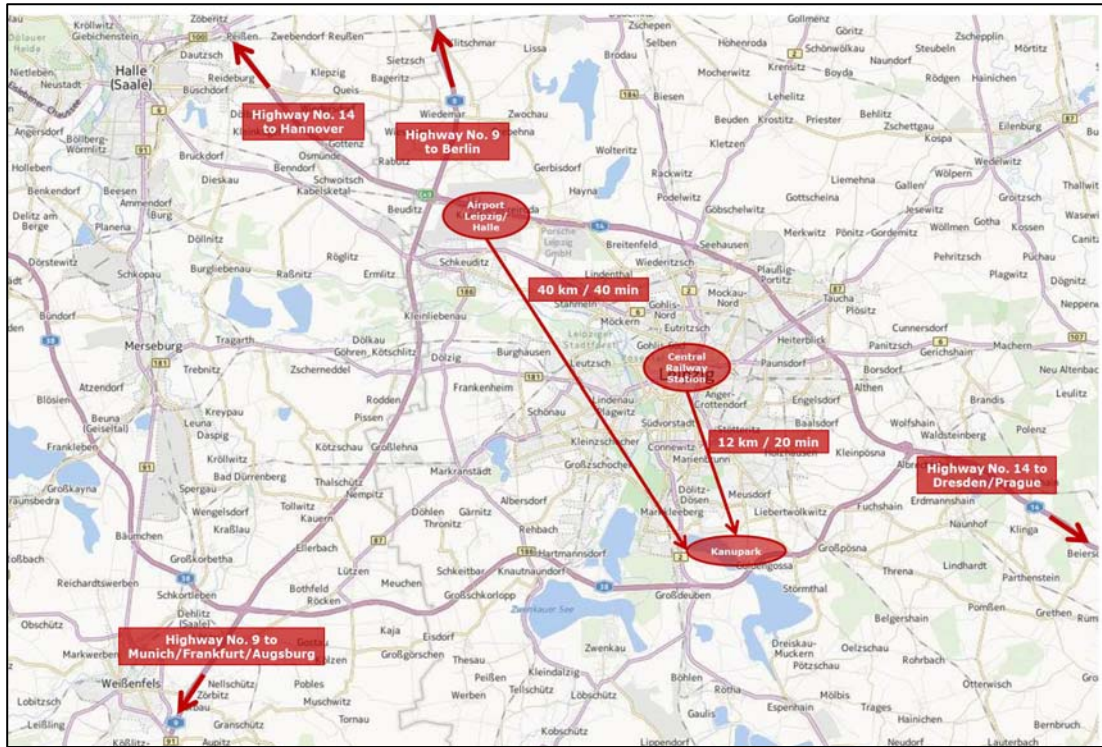
Stadt Leipzig





All the main cities listed above can be reached via highways without any road charges or vignette (standing: January 2015). In addition all the named cities are very well accessible by trains.

The distances to the major transport hubs around the venue are...



Distance from...	...to Kanupark Markkleeberg
Airport Leipzig/Halle (LEJ)	40 km / 40 min
Airport Berlin Schönefeld (SXF)	210 km / 2 h
Airport Frankfurt (FRA)	400 km / 4 h
Airport Munich (MUC)	420 km / 4 h
Exit highway No. 9 (Berlin - Munich/Frankfurt)	35 km / 20 min
Exit highway No. 14 (Hannover - Dresden)	12 km / 10 min
Exit highway No. 38 (Connection between highway No 9 and No. 14)	4 km / 5 min
Leipzig Central Railway Station	12 km / 20 min

## VISA AND CUSTOMS INFORMATION

The German Canoe Federation will provide Invitational Letters where needed. All National Federations have to check the necessity of visas with their local authorities. For Visa support please send an email to [office@slalomworldcup.com](mailto:office@slalomworldcup.com).

Additional information can be found on the website of the Federal Foreign Office:

[www.auswaertiges-  
amt.de/sid\\_485CA3CC2F4AE6B9A0DA947C3EB4F5EC/EN/EinreiseUndAufenthalt/Uebersicht\\_node.html](http://www.auswaertiges-amt.de/sid_485CA3CC2F4AE6B9A0DA947C3EB4F5EC/EN/EinreiseUndAufenthalt/Uebersicht_node.html)

The general customs procedure as at every sport event will be applied. Alternatively the teams can make use of a CARNET to alleviate custom procedures. For more details please have a look on:

[http://www.zoll.de/EN/Home/home\\_node.html;jsessionid=6DDF959953939E483AE27ED6CACCB7A9](http://www.zoll.de/EN/Home/home_node.html;jsessionid=6DDF959953939E483AE27ED6CACCB7A9)

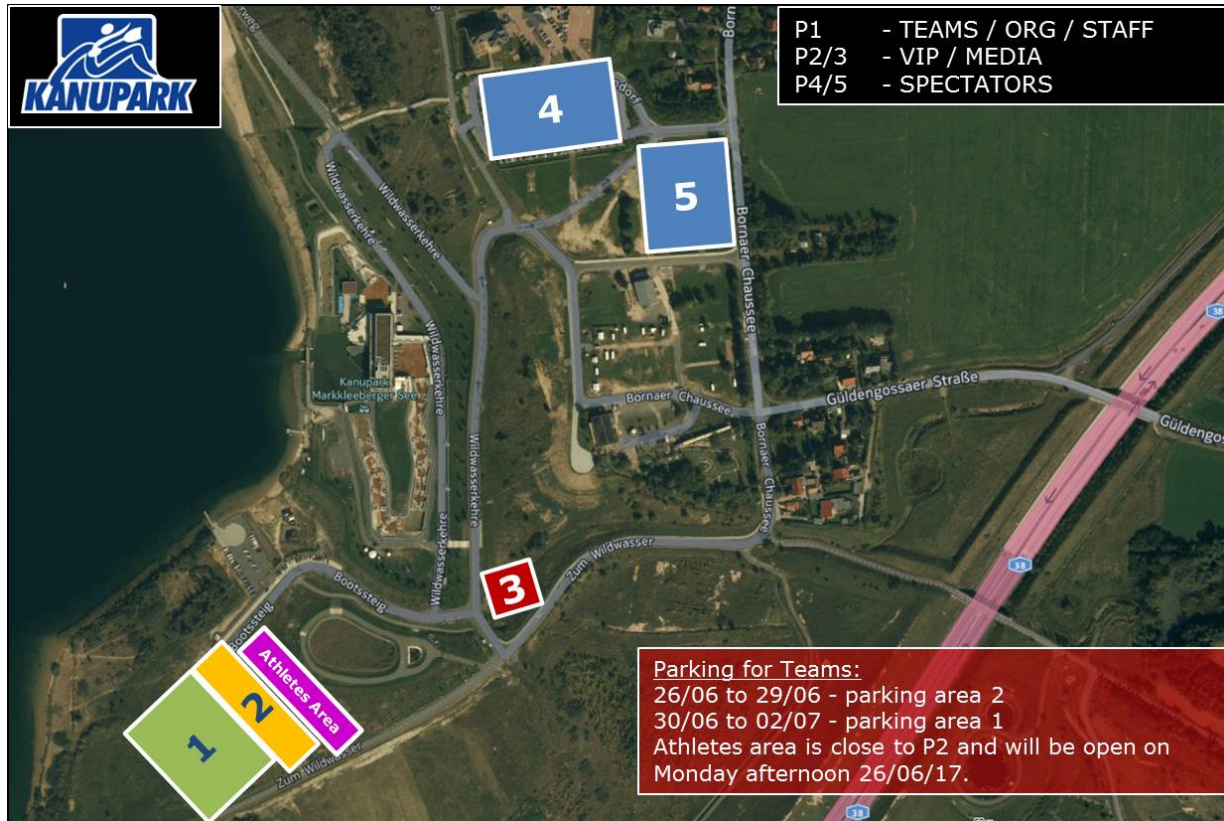


Stadt Leipzig



## PARKING RULES

During the whole access period (26<sup>th</sup> June to 2<sup>nd</sup> July 2017) you can leave your cars at the special parking area outside Kanupark. This area is signposted as the event parking area and situated next to the Teams Area.



Please use just these areas and keep free the escape routes for the emergency services. Because of the limited amount of parking areas please note that you have to park space-saving.

Furthermore take account of the following articles:

- Use marked parking areas just outside the Kanupark area
- There is no parking on footpaths or the streets around the venue!

## TICKETS FOR SPECTATORS

During 2017 ICF Canoe Slalom World Cup Markkleeberg we will charge the following entrance fees:

Friday, 30 <sup>th</sup> June 2017	Entrance free
Saturday, 1 <sup>st</sup> July 2017	6.00 EUR
Sunday, 2 <sup>nd</sup> July 2017	6.00 EUR
All-Day-Ticket	10.00 EUR

Children aged less than 14 years do not have to pay for entrance. Reduced prices are valid for pupils, students, disable persons, pensioners.



Stadt Leipzig







## PRESS AND MEDIA INFORMATION

All **journalists** who like to cover the 2017 ICF Canoe Slalom World Cup Markkleeberg are requested to send an email to [info@slalomworldcup.com](mailto:info@slalomworldcup.com) not later than **27<sup>th</sup> June 2017**.

## CONTACT DETAILS

Leipziger-Kanu-Club e.V.  
Christoph Kirsten  
President of Local Organising Committee  
Wildwasserkehre 1  
044166 Markkleeberg  
Germany

Phone +49 / 160 / 365 44 72  
Fax +49 / 34 297 / 14 12 98  
email [office@slalomworldcup.com](mailto:office@slalomworldcup.com)  
web [www.slalomworldcup.com](http://www.slalomworldcup.com)



STADT MARKKLEEBERG



Stadt Leipzig

